



PLOT 4

KIRKFORTHAR FEUS, BY MARKINCH, KY7 6LR

£415,000
FREEHOLD

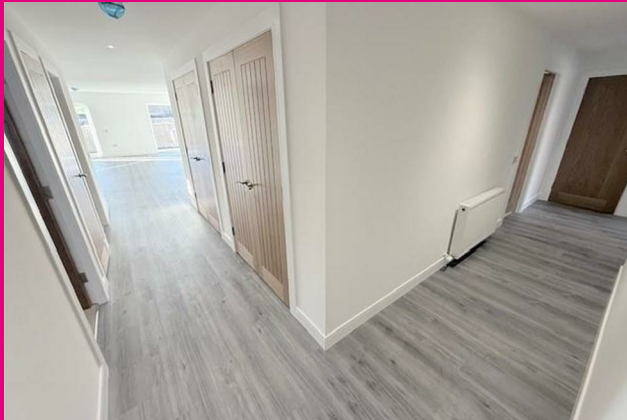
Exciting early Bird reservation Offer Available Now!..... Choice of Kitchens/ Sanitary Ware/ Door Options Enquire further now xx Welcome to this stunning new build development of 6 (3 & 4 bedroom) link detached bungalows in the picturesque location of Kirkforthar Feus just outside Markinch. 'The Douglas design Plot 4' This luxurious property ' The Douglas ' boasts four double bedrooms, two bathrooms, and a spacious reception room, offering ample space for comfortable living. Built in 2024, this energy-efficient home features bespoke internal and external finishes, ensuring a modern and stylish living environment. The property is part of a luxury development of three homes, providing a sense of exclusivity and high-end living. Situated in a semi-rural setting, this home offers breathtaking views of the countryside and Falkland Hill, creating a tranquil and idyllic atmosphere. The large enclosed gardens provide the perfect space for outdoor activities and relaxation, making it ideal for families or those who appreciate the beauty of nature. With parking available for up to four vehicles, commuting is made easy for residents. The property also features double glazing and air source heating, adding to its energy efficiency and sustainability. Don't miss the opportunity to own this exceptional property in Kirkforthar Feus, offering a perfect blend of luxury, comfort, and natural beauty.



home sweet home
estate agents
your local property experts

PLOT 4

- 'THE DOUGLAS PLOT 4' LUXURY DEVELOPMENT OF 3 & 4 BEDROOM LINK DETACHED BUNGALOWS
- BESPOKE INTERNAL/ EXTERNAL STANDARD OF FINISH
- STUNNING COUNTRYSIDE VIEWS TOWARDS FALKLAND HILL
- HIGH SPEC FITTED KITCHENS & SANITARY WARE
- DOUBLE GLAZED - AIR SOURCE HEATING FOR EFFICIENCY
- DRIVEWAY - CAR PORT
- LARGE ENCLOSED GARDEN PLOT
- BEAUTIFUL LOCATION
- ENQUIRIES TO HOME SWEET HOME DIRECT FOR MORE INFORMATION



FULL DESCRIPTION

Exciting early Bird reservation Offer Available Now!..... Choice of Kitchens/ Sanitary Ware/ Door Options Enquire further now xx Welcome to this stunning new build development of 6 (3 & 4 bedroom) link detached bungalows in the picturesque location of Kirkforthar Feus just outside Markinch. 'The Douglas design Plot 4' This luxurious property ' The Douglas ' boasts four double bedrooms, two bathrooms, and a spacious reception room, offering ample space for comfortable living. Built in 2024, this energy-efficient home features bespoke internal and external finishes, ensuring a modern and stylish living environment. The property is part of a luxury development of three homes, providing a sense of exclusivity and high-end living. Situated in a semi-rural setting, this home offers breathtaking views of the countryside and Falkland Hill, creating a tranquil and idyllic atmosphere. The large enclosed gardens provide the perfect space for outdoor activities and relaxation, making it ideal for families or those who appreciate the beauty of nature. With parking available for up to four vehicles, commuting is made easy for residents. The property also features double glazing and air source heating, adding to its energy efficiency and sustainability. Don't miss the opportunity to own this exceptional property in Kirkforthar Feus, offering a perfect blend of luxury, comfort, and natural beauty.

LOCATION

Situated in a small picturesque hamlet to the outskirts of Markinch, ideally situated for commuting, outdoors walk, schooling & amenities provided in Glenrothes itself. Train stations nearby at Markinch - Ladybank - Glenrothes By Thornton.

VESTIBULE

RECEPTION HALL

OPEN PLAN LOUNGE/ DINING AREA

OPEN PLAN KITCHEN

UTILITY ROOM

MASTER BEDROOM

EN-SUITE SHOWER-ROOM

BEDROOM 2

BEDROOM 3

BEDROOM 4

FAMILY BATHROOM

DRIVEWAY

CAR PORT

LARGE FRONT / REAR GARDEN PLOT

WARRANTY

Warranty

- Provided by Global Home Warranties UK

PLOT 4



Contact your local experts today
to book your free valuation

home sweet home
estate agents

2024

EXCITING EARLY BIRD CHOICES AVAILABLE NOW!
CHOICE OF KITCHENS/ SANITARY WARE/ DOORS
& OTHER ITEMS FOR LIMITED PERIOD!...



PLOT 4, KIRKFORTHAR FEUS, BY MARKINCH, KY7 6LR



